



产品配色与工艺说明图

Product Colour, Material & Finishing Specifications

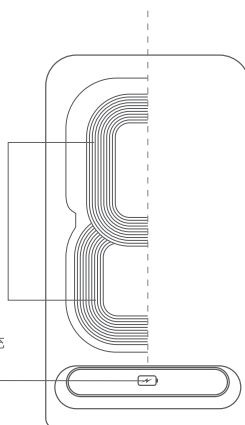
Product Model 产品型号	AZCS-F002	Brand 品牌	中性	Job No. 图档编码	
Product Type 产品类	无线充电器说明书	Description 描述	/	Revision 版本号	1.0
Dimension 尺寸	90*65mm	Original Designer 原设计师		Date 日期	2016.10.12
Scale 比例	1:1	Technology 工艺	128g哑粉纸 双面四色印刷	Verifying 审核	

2线圈 快速无线充电器 用户手册

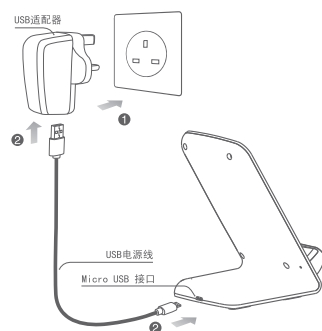
用户手册

感谢您购买公司产品, 本产品是一款智能手机无线充电器, 让您轻松体验数码产品的无限乐趣。使用本产品前请认真阅读本手册并妥善保存, 以备查阅。

2个发射线圈让您的手机充电无盲点, 随放随充。
人性化LED充电指示灯显示充电状态。

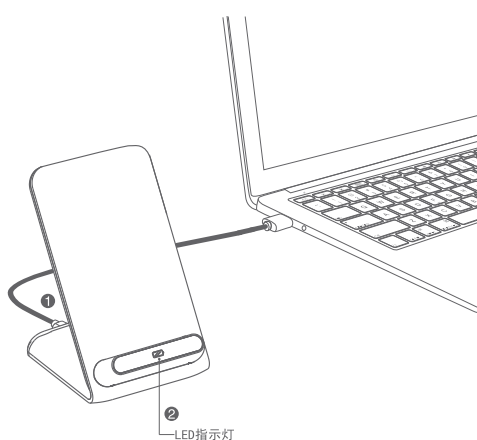


连接适配器充电



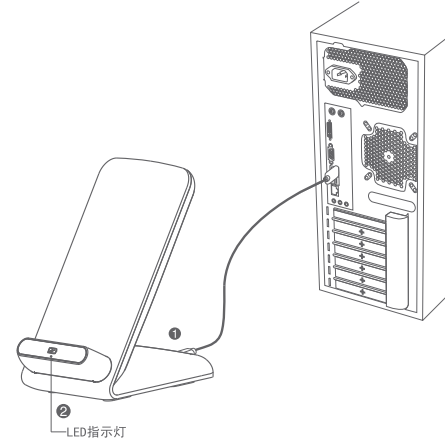
- ① 将电源适配器插在插座上。
 - ② USB电源线一端连接适配器, 一端连接充电板。LED 充电指示灯为绿色, 进入待机模式。
- 注: 此产品可支持两种无线充电模式
1. 快速无线充电模式 (输出10W)
当设备支持快速无线充电时启动, 例如: 三星 Galaxy S6 Edge +, Galaxy Note5, Galaxy S7, Galaxy S7 edge.
2. 标准无线充电模式 (输出5W)
当设备只支持标准无线充电时启动, 例如: 三星Galaxy S6, S6 Edge 等其他支持Qi无线充电的设备
* 只有高通快充适配器或三星原装快充适配器才支持本产品的快充功能, 电源适配器须另外购买。

连接笔记本电脑充电



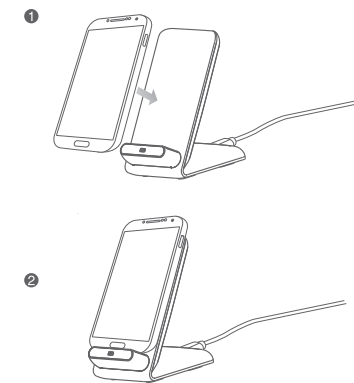
- ① 将USB电源线一端连接笔记本USB接口, 另一端连接充电板。
- ② 充电板指示灯自动点亮为绿色, 进入待机模式。

连接台式电脑充电



- ① 将USB 电源线一端连接台式电脑主板 USB 接口, 另一端连接充电板。
- ② LED 充电指示灯出现蓝绿灯交替闪烁, 2秒钟后指示灯长亮绿灯, 进入待机模式。

手机正确充电方式



- ① 确认充电板指示灯为绿色, 处于连接电源待机状态。
- ② 将带有无线充电功能的手机置于发射板上, LED 指示灯变蓝色, 表示正在充电。当 LED 指示灯出现蓝绿灯交替闪烁时, 表示手机摆放位置不正确, 请重新摆放手机, 直到 LED 指示灯变为蓝色。
- ③ 当使用该产品为三星自带无线充电机型充电, 手机充满电后, 指示灯长亮绿灯。其他设备充满电后, LED 指示灯不亮绿灯而亮蓝光。若手机长时间未拿开, 该手机将保持电量在 100% 状态 (补充充电)。

规格参数

输入电压: DC5V 2A DC9V 1.8A 电力转换: ≥72%
工作频率: 110~205KHz 接收距离: ≤10mm
规格尺寸: 115*70*90mm 产品重量: 170g

注意事项

1. 请勿挤压或碰撞。
2. 请勿自行拆卸或投入火中、水中, 避免造成短路漏电。
3. 请勿在严重高温、潮湿或腐蚀性环境下使用无线充电器, 避免损坏电路出现漏电现象。
4. 请勿与带磁条或者芯片的磁卡 (身份证、银行卡等) 放置太近, 避免造成磁卡失效。
5. 请保持植入医疗设备 (心脏起搏器、植入性耳蜗等) 与无线充电器之间的距离至少为20cm, 以避免对医疗设备造成潜在干扰。
6. 应看管好儿童, 以确保他们不将无线充电器当成玩具来玩, 以避免不必要的意外。

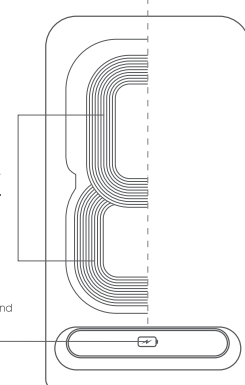
说明书涉及图片均为示意图, 最终产品以实物为准
内含: 无线充电器、电源线、产品说明书

2-Coils Fast Wireless Charger User Manual

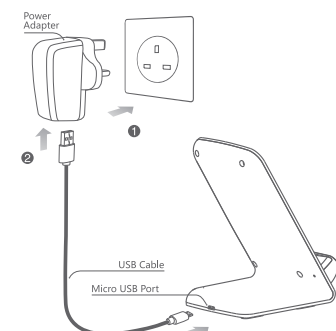
User Manual

Thanks for choosing us!
This is a smart phone wireless charger that allows you enjoy the fun of digital products easily.
Please kindly read the user manual before using and keep it for future reference.

Built-in 2 coils to make sure larger high-efficiency charging position.
LED light clearly show the standby and charging condition.

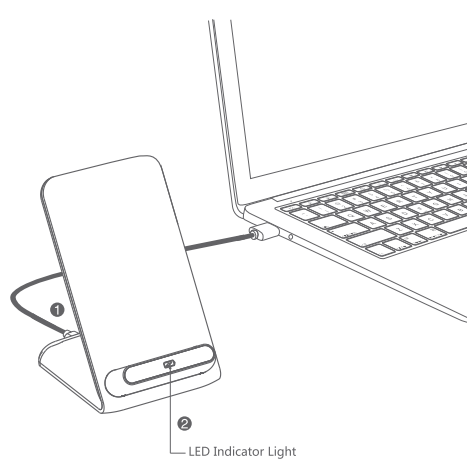


Connect to Power Adapter



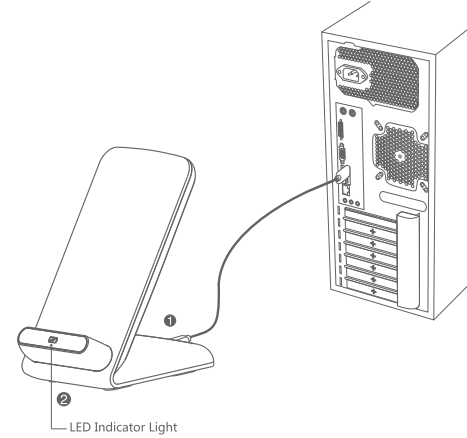
- ① Connect the power adapter to socket.
 - ② Connect adapter to the USB 2.0 interface, the other Micro USB to pad. LED light become green and enter to standby mode.
- Note: This product universally support two modes of wireless charging
1. Fast Wireless Charging (output 10W)
It works with device which support fast wireless charging, such as Samsung Galaxy S6 Edge +, Galaxy Note5, Galaxy S7, Galaxy S7 Edge.
2. Standard Wireless Charging (output 5W)
It works with device which only support standard wireless charging. Such as Samsung Galaxy S6, S6 Edge and other Qi-enabled devices.
* Only Qualcomm quick charge adapter or Samsung original fast charge adapter support this product's fast wireless charging function, you need to buy it separately.

Connect to Laptop for Charging



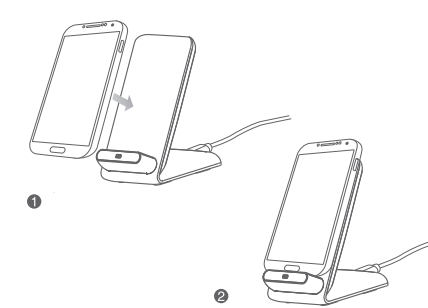
- ① Connect the USB 2.0 interface into laptop USB port, the other Micro USB to pad.
- ② LED light become green and enter to standby mode.

Connect to Desktop for Charging



- ① Connect USB interface into desktop motherboard USB port and the other side Micro USB connect to the charging pad.
- ② While the blue and green LED lights flashing alternately, LED light keeps green after two seconds and enter to standby mode.

Charging Mode



- ① Make sure the charging pad indicator light turn on green, under standby status.
- ② Put the Qi enabled smartphones on wireless charging pad, LED light turn to blue means start charging. It shows that the charging position is improper when the blue and green LED light flashing alternately, remind to place the phone on proper position until LED light turn to blue.
- ③ When this product work with Samsung phones which are built-in wireless charging function, the green LED light keeps green if the battery is fully charged. The LED light shows blue for other device when fully charged. If don't move the phone, the battery power keeps in fully charged status (supplementary charge).

Specification

Input DC5V 2A DC9V 1.8A Charging Efficiency: ≥72%
Frequency: 110~205KHz Charging Distance: ≤10mm
Size: 115*70*90mm N.W: 170g

Notes

1. Do not squeeze or collisions.
2. Do not disassemble or throw into fire or water, to avoid causing a short circuit leakage.
3. Do not use wireless charger in severely hot, humid or corrosive environments, to avoid circuit damage and occurs leakage phenomenon.
4. Do not place too close with magnetic stripe or chip card (ID card, bank cards, etc.) to avoid magnetic failure.
5. Please keep the distance at least 20cm between implantable medical devices (pacemakers, implantable cochlear, etc.) and the wireless charger, to avoid potential interference with the medical device.
6. To take care of the children, to ensure that they won't play the wireless charger as a toy, to avoid unnecessary accidents.

The involved images are sketch maps, the final product as per the material subjects.
Includes: wireless charger, power cable, user's manual.