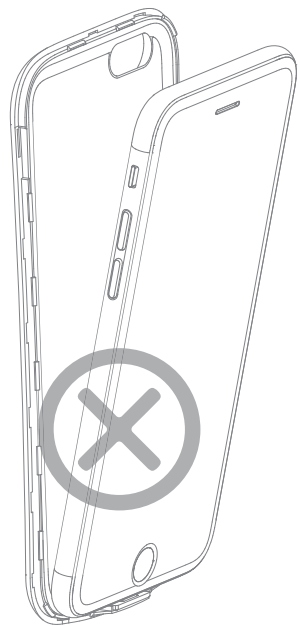
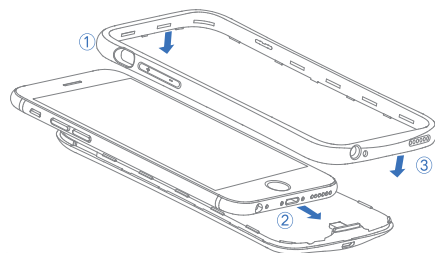


拆卸警告 Disassembly Warning



拆装手机时，请勿大角度翘起手机，否则容易导致产品接口断裂。
When disassemble the phone, please do not make it at big angle, otherwise, the product charging port will break easily.

Installation and Disassembly



① Remove the frame

Disassemble the frame from the upper left corner, make the frame and battery case separation.

② Put phone into case

Push the phone into battery case from the inside of top case, ensure the connector fully insert into the charging port.

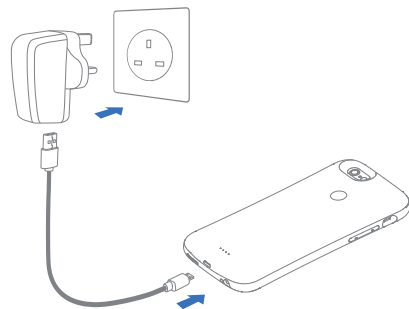
③ Install the frame

Make the product frame match with buckle slot of battery case, press each corner and edge to ensure fixed tightly.

* Do not separate phone and battery case in large angle, or it may lead to the charging connector break. The right way to disassemble case is to push phone from down to up of headphone jack, until the phone and charging port separate fully.

Connect to adapter for charging

Connect the power adapter to socket, connect the USB cable to adapter and the other end to the product USB port.



Install APP

The first time we put the phone into the Beike, the system will pop up the dialog box to install APP, click the "App Store" button, automatic search APP to download and install.



Note: If you miss the prompt, go to the AppStore search for "beike" Download and install App.



After installed, long press the product's back button to open the APP startup dialog box, choose "Allow" Open the Beike Experience Tour.



Note: Directly click the APP icon on the desktop and then long press the product's back button. Use Beike OTG function.

Charging

When charging by Micro USB cable, the battery case LED light status and battery percent correspondingly showing as below:

Capacity	LED1	LED2	LED3	LED4
0-25%	flash	off	off	off
25-50%	on	flash	off	off
50-75%	on	on	flash	off
75-99%	on	on	on	flash
Fully charged	on	on	on	on

Discharge

When battery case charge the phone, the battery case LED light status and battery percent correspondingly showing as below:

Capacity	LED1	LED2	LED3	LED4
Low power	flash	flash	flash	flash
0-25%	on	off	off	off
25-50%	on	on	off	off
50-75%	on	on	on	off
75-99%	on	on	on	on

Features:

Safety: This product designed with protection of over-charging, over-discharging and short circuit. That provide safety for users and their mobile phone.

High efficiency: Charging current is 5V/1A, same as iPhone original charging cable, transfer efficiency ≥ 72%.

Quality: High quality battery cell and reliable supplier, high quality chipset of charging and dis-charging.

Specification

Battery Type: Lithium polymer battery
Battery capacity: 3.8V 2200mAh
Dimension: 145*74*12mm
Weight: 70g
Output: DC 5V/1A
Input: DC 5V/1A
Transfer efficiency: ≥ 72%
Operating temperature: -20°C-50°C

Safety rules

- For the first time use, please charge the product fully.
- This product contains lithium-ion batteries, it's strictly prohibited to any dismantling, extrusion, puncture and short circuit this product. To avoid possible damage to the batteries or other hazards, these are not included in the warranty.
- Please put the product away from liquid and humid environment, otherwise it will cause serious damage to the product. If the product damage caused by water, that's not include warranty.
- Do not place the product in an environment where the temperature is too low or too high (below -20 °C or above 50 °C); Please don't use this product outdoors in a thunderstorm weather. Thunderstorms could cause products to malfunction and increase the risk of electric shock.

After-sales service and support

If the product have non-human damage problems, please return to us or dealer for warranty.

