

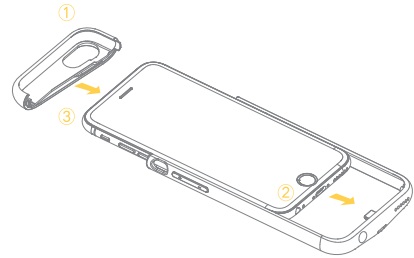
Long press: Activate APP
 Double-click: start charging
 Double-click: stop charging



Power Indicator Light
 25% 50% 75% 100%

USB Interface

Installation and Disassembly



① Remove frame

Remove the camera part and make it separated from the product.

② Install mobile phone

Push the mobile phone into case, make the product lightning plug completely insert into the phone charging port.

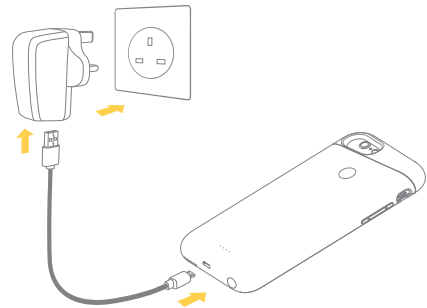
③ Install frame

Install the camera part back to the product and fasten it well.

Connect to adapter for charging

Connect the power adapter to socket, connect the USB cable to adapter and the other end to the product USB port.

* It will give priority to charging mobile phone, then charging the battery after the phone fully charged.

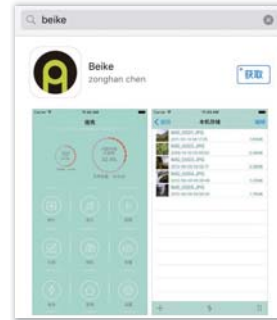


Install APP

The first time we put the phone into the Beike, the system will pop up the dialog box to install APP, click the "App Store" button, automatic search APP to download and install.



Note: If you miss the prompt, go to the AppStore search for "beike" Download and install App.



After installed, long press the product's back button to open the APP startup dialog box, choose "Allow" Open the Beike Experience Tour.



Note: Directly click the APP icon on the desktop and then long press the product's back button. Use Beike OTG function.

Charging

When charging by Micro USB cable, the battery case LED light status and battery percent correspondingly showing as below:

Capacity	LED1	LED2	LED3	LED4
0-25%	flash	off	off	off
25-50%	on	flash	off	off
50-75%	on	on	flash	off
75-99%	on	on	on	flash
Fully charged	on	on	on	on

Discharge

When battery case charge the phone, the battery case LED light status and battery percent correspondingly showing as below:

Capacity	LED1	LED2	LED3	LED4
Low power	flash	flash	flash	flash
0-25%	on	off	off	off
25-50%	on	on	off	off
50-75%	on	on	on	off
75-99%	on	on	on	on

Features:

Safety: This product designed with protection of over-charging, over-discharging and short circuit, That provide safety for users and their mobile phone.

High efficiency: Charging current is 5W/1A, same as iPhone original charging cable, transfer efficiency ≥ 72%.

Quality: High quality battery cell and reliable supplier, high quality chipset of charging and dis-charging.

Specification

Battery Type: Lithium polymer battery
 Battery capacity: 3.8V 2200mAh
 Dimension: 72×144×12mm
 Weight: 70g
 Output: DC 5V/1A
 Input: DC 5V/1A
 Transfer efficiency: ≥ 72%
 Operating temperature : -20°C~50°C

Safety rules

- For the first time use, please charge the product fully.
- This product contains lithium-ion batteries, it's strictly prohibited to any dismantling, extrusion, puncture and short circuit this product. To avoid possible damage to the batteries or other hazards, these are not included in the warranty.
- Please put the product away from liquid and humid environment, otherwise it will cause serious damage to the product. If the product damage caused by water, that's not include warranty.
- Do not place the product in an environment where the temperature is too low or too high (below -20 °C or above 50 °C); Please don't use this product outdoors in a thunderstorm weather. Thunderstorms could cause products to malfunction and increase the risk of electric shock.

After-sales service and support

If the product have non-human damage problems, please return to us or dealer for warranty.

